







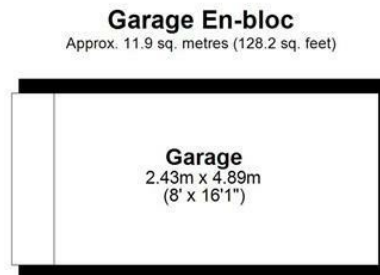
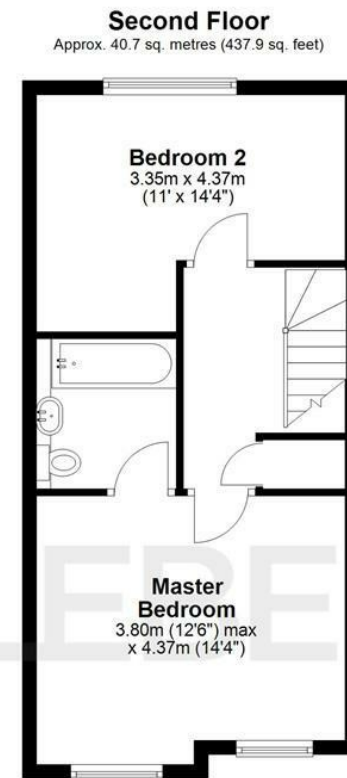
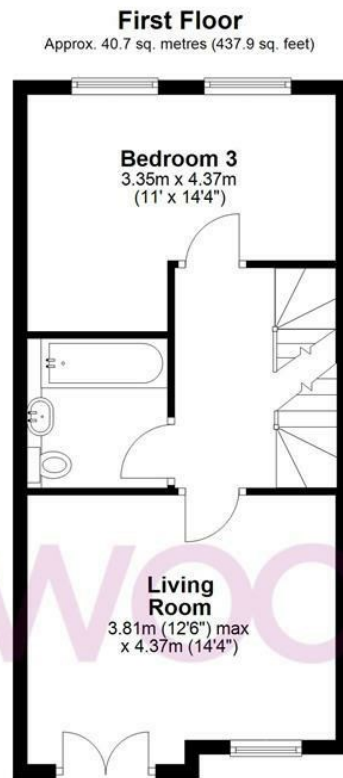
## Plomer Avenue, Hoddesdon, EN11 9FQ

Westwood Leber are delighted to offer this well presented four bedroom family home set over three floors and offered CHAIN FREE! This deceptively spacious property is situated within walking distance of local amenities and good local schools and the accommodation benefits from two bathrooms, ground floor w/c, large kitchen/breakfast room, well sized rear garden and a garage nearby to the rear with parking. We would highly recommend an internal viewing.



**WESTWOODLEBER**





Total area: approx. 133.9 sq. metres (1441.8 sq. feet)

FOR ILLUSTRATIVE PURPOSES ONLY. NOT TO SCALE. Whilst every attempt had been made to ensure the accuracy of the floor plan shown, all measurements, positioning, fixtures, features, fittings and any other data shown are an approximate interpretation for illustrative purposes only and are not to scale. No responsibility is taken for any error, omission, misstatement or use of data shown. Property marketing provided by Foto Ltd.  
Plan produced using PlanUp.





















WESTWOODLEBER



WESTWOODLEBER



WESTWOODLEBER



WESTWOODLEBER







